



London King's Cross

# Station Guide



Information older, disabled and less mobile passengers.

Including accessible facilities and passenger assistance services.

# Contents



<b>Introduction</b>	<b>04</b>
<b>Station overview</b>	<b>05</b>
Who does what at our station	05
Station operating hours	05
Train operators at our station	06
London Underground stations at our station	06
<b>Station access</b>	<b>07</b>
Building works at the station	07
Step-free access	07
Tactile paving	09
Arriving by car	10
Parking	10
Taxis	11
<b>Buying a ticket</b>	<b>12</b>
Ticket office opening hours	13
Ticket vending machine operating times	13
<b>Passenger Assistance</b>	<b>14</b>
Passenger Assistance at our station	14
Accessing Passenger Assist services	16
Booking in advance	16
Turn up and go	18
Help points	19
Where to go when you arrive at the station	19
Replacement transport	20

---

<b>Interchanging</b>	<b>21</b>
Using the station at busier times	23
<b>If things don't go as planned</b>	<b>24</b>
Booked assistance failures	24
Planned or unplanned disruption	24
<b>Station facilities</b>	<b>26</b>
Seating	26
Toilets	27
Showers	28
Left luggage	29
Customer information screens	30
Information points	31
Hearing loops	32
Catering and retail	32
<b>Getting in touch</b>	<b>34</b>
If things go wrong	34
On the day of travel	35
How to escalate a complaint	36
How to contact train operators	37
<b>Further information</b>	<b>39</b>
About this guide	39
Our ATP	39
Working with train operators	39
Our work with disabled people on improving accessibility	40
National Freephone Passenger Assist	40

# Introduction



## Welcome to London King's Cross station.

This leaflet sets out:

- The help that is available at the station for older, disabled and less mobile passengers and how to get it
- The facilities available in and around the station

We work in collaboration with all relevant parties, including our train operators, to meet the standards outlined in this guide and commit to continuously improve our services and facilities for older, disabled and less mobile passengers.



# Station overview

---

## Who does what at our station

Network Rail manages the station and maintains facilities in the station such as induction loops and other accessibility features.

LNER and Great Northern provide assistance to all passengers in the station.

Our train operators sell tickets to passengers and provide the train services.

---

## Station operating hours

Day	Time
Monday – Friday	05:00 – 01:40
Saturday	05:00 – 01:11
Sunday	05:30 – 01:36



## Train operators at our station are:



**London North Eastern Railway** – trains between London, Yorkshire and Scotland



**LUMO** – trains between London and Edinburgh



**Grand Central** – trains between London, Yorkshire and Sunderland



**Hull Trains** – trains between London, Stevenage and Hull



**Great Northern** – trains between London and Cambridge



**Govia Thameslink** – trains to Brighton, Gatwick Airport, Victoria Station.

## London Underground stations at King's Cross



King's Cross St Pancras Underground station is operated by Transport for London (TfL) and further information on their services can be found using their website [www.tfl.gov.uk](http://www.tfl.gov.uk).

For information on how to interchange between our station and the Underground and the help we can provide, please see page 21 of this leaflet, '[Interchanging](#)'.



**Transport  
for London**

# Station access

---

## Step-free access

### Platforms 0–10

All our platforms are step-free and accessible via the main concourse. Platforms 0–8 can also be accessed from the mezzanine where lifts operate to platform level.

---

## London Underground

There is step-free access from National Rail concourse to London Underground Platforms via lifts and escalators.



## First-class lounge

Step-free access is available by using our lift situated next to the Little Waitrose on the main concourse.

---

## Lift access to all floors

A lift is situated next to the bank of three escalators.

---

## Step-free classification

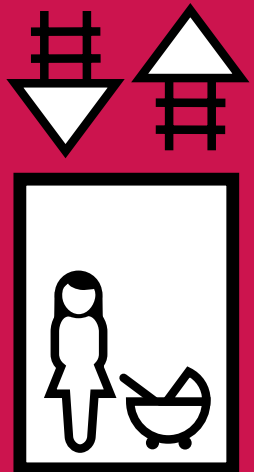
Under the industry step-free classification system, King's Cross is a Category A station, meaning that the station has step-free access to and between all platforms, at all times trains are running, via level access, lifts or ramps (in accordance with new-build standards re gradient/length).



# Tactile paving/panels

Tactile paving/panels are used to help passengers with visual impairments to detect the platform edges at our stations. These are comprised of bumps that are detectable with a walking cane, by guide dogs and/or felt underfoot.

At London King’s Cross all of our platforms are fitted with tactile paving/panels.



## Arriving by car

Our pick-up and drop-off points are located on the station forecourt off Pancras Road, waiting time is limited to 40 minutes, there are 3 Blue Badge spaces for drop-off and pick-up.

- For ease, please find the sat nav postcode for pick-up and drop-off point: **N1C 4TB**

---

## Parking

There are no station car parking facilities at King's Cross station. There is an NCP long stay car park situated across the road in St Pancras Station where there are 12 Blue Badge spaces, normal tariff applies.

---

## Buses

Buses arrive and depart from street level, step free access is available to and from the concourse.

Buses are operated by Transport for London (TfL) and further information on their services can be found using their website [www.tfl.gov.uk](http://www.tfl.gov.uk) or on the TfL go app.

For information on how to interchange and buses between our station and the Underground and the help we can provide, please see page 21 of this leaflet, 'Interchanging'.

## Taxis

We have an accessible taxi rank located outside the Great Northern Hotel on Pancras Road.

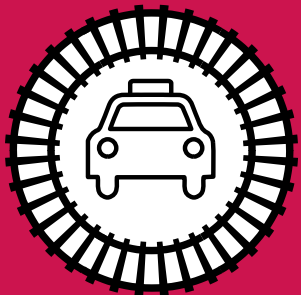
Our train operating staff are available when you alight or depart between the hours of 05:30 – 01:35 each day and will help passengers who need or have booked passenger assistance between the taxi rank and the station.

To access the taxi rank, follow signs from inside the station.

### **For information:**

The taxi rank is a designated TfL taxi rank operating black cabs, all of which are wheelchair accessible. Some of the newer 'black cabs' are also fitted with induction loops and intercoms for hearing aid users.

Staff are located near the taxi rank and can assist passengers alighting at the rank.



# Buying a ticket



Ticket machines are located:

- In the main ticket office on the main concourse behind the tree
- Opposite WHSmith
- At the main entrance in front of the Great Northern Hotel

There is a height adjusted ticket machine on the main concourse

Our ticket machines are all equipped with smart card readers.

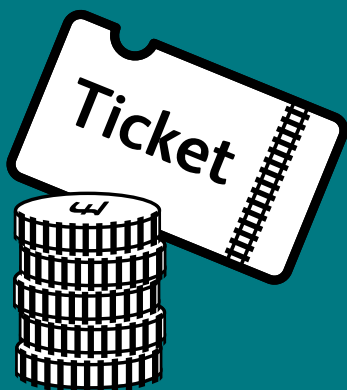
Our passenger assistance staff can also help you to buy tickets if required.

## Ticket office opening hours

Day	Time
Monday – Saturday	06:00 – 23:00
Sunday	07:45 – 23:00

## Ticket vending machine operating times

Machines are available during station operating hours.



# Passenger Assistance

## Passenger Assistance at our station

We offer assistance to older, disabled and less mobile passengers who need help accessing our facilities and train services.

Our Passenger Assistance team have access to wheelchairs and Passenger Assistance vehicles to help us assist you in and around the station.

**Note:** Wheelchairs are not available for passenger use without the help of one of our team.

### What services are included?

Our Passenger Assistance team can aid with:

- Offering a helping hand to the station
- Support when boarding, finding a seat, or alighting the train
- Meeting you from your train and taking you to your next train or the exit
- Arranging a ramp to assist you on or off your train
- Assistance relating to a non-visible disability
- Advising on the accessibility of other stations across the network for your onward journey
- Carrying your bag(s) – up to three items of luggage as per the National Rail Conditions of Travel

---

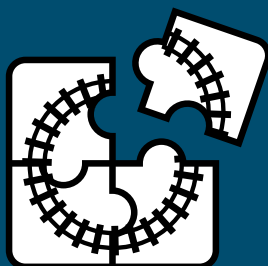
Distances from the concourse to trains can be lengthy at King's Cross so to assist you in a timely and safe manner we would request our passengers to arrive in good time; we recommend arriving 30 minutes prior to departure.

When arriving at the station by train where it is the terminating stop for the train, our aim is to meet you on time. Sometimes it may take us a little longer because we often assist more than one passenger per train, but we have a service commitment to not exceed 5 minutes from arrival and 10 minutes during disruption.

If you arrive at the station much earlier than your planned departure time, you may have to wait for assistance staff to become available.

King's Cross is one of the busiest stations in the country for Passenger Assistance bookings. Because our station is so busy, we do recommend that you book in advance wherever possible.

Pre-booked assistance can be booked up to 2 hours in advance of travel.



# Accessing Passenger Assist services

Assistance for any journey, including journeys with multiple connections using multiple train companies, can be booked in advance, or can be requested on the day from a member of staff.

## Booking in advance

There are several ways you can book assistance in advance:

1. **Contact the relevant train operator for your journey via their website.**
2. **Passenger assistance on a web browser [passengerassistance.com](https://passengerassistance.com).** We will tell you when your booking is confirmed. Then, all you have to do is book your ticket and you're on your way.
3. **Transreport Passenger Assistance App.** You will be able to download the app by searching for "Passenger Assistance" on your app store (iOS/Android). Once found, click 'Install' and wait for the app to appear. Send your request to book assistance on the app and this will be sent directly to the train operator, who will arrange assistance for you. We will tell you when your booking is confirmed. Then, all you have to do is book your ticket and you're on your way.





4. Visit the [National Rail Enquiries website](#).
5. Follow the instructions provided via any other train booking service provider.

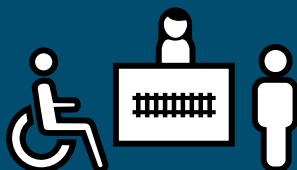
On the day you can request assistance from any of our team or go directly to our assisted travel meeting point where one of our team will help arrange assistance with you.

---

## Tell us about your journey

The booking agent will need to know the following information, so it may be useful to have this to hand when you call:

- The date and time of the service you are planning to travel on
- Your seat reservation details (if you have one)
- If you are travelling with other people, especially if they also require assistance, at London King's Cross our assistance vehicles can only seat three people each
- If you have any requests such as a preference to being assisted on foot rather than in a buggy, please make this clear to the booking agent



## ‘Turn up and go’

As well as booking in advance, you can ask for assistance on the day that you are travelling (we call this ‘turn up and go’).

Assistance services are available at all times the station is open. You may need to wait until staff are available to help, but our policy is to make it happen.

Please go to our Customer Information point during opening hours or ask a member of staff if this is closed.



## Help points

Push button information points where you can speak to a member of staff 24/7. These are located at:

- Halfway along all platforms
- In the accessible lounge
- The accessible passenger drop off bays
- The mezzanine footbridge ticket gates

---

## Where to go when you arrive at the station

We have a Customer Information Point on the main concourse, opposite the “Platform 9 3/4 shop”. This is our assistance meeting point where you can check in for assistance you have pre-booked or make a ‘turn up and go’ request.

Please note our assistance lounge is not currently staffed.



## Assisted travel lounge opening hours

Day	Time
Monday – Friday	06:30 – 23:00
Saturday	Open till 20:00
Sunday	Open till 23:00



After meeting at the Customer Information Point with checking in or booking assistance they can then direct you to our Passenger Assist Lounge.

There is a comfortable seating/waiting area exclusively for our passengers, marked as priority seating. These seats are heated for your comfort.

Outside of these times, passenger assistance services are still available, by speaking to a member of staff on the concourse.

---

## Replacement transport

In some circumstances, alternative accessible transport might be offered **during planned works or times of disruption.**

We will work with your train operator to help you make your journey, this may include the train operator arranging alternative accessible transport where appropriate.

# Interchanging

This section explains how you can change from one mode of transport to another and how to navigate within the station.

Please note that we can only provide assistance on the station premises to/from King's Cross London Underground, taxi rank and bus station.

In close proximity to London King's Cross are two other large terminal stations – St. Pancras International and London Euston. This journey can be made at street level, we regret we cannot assist between King's Cross and London Euston but can assist between King's Cross and St Pancras International.

## Bus/London Underground

The bus stops are at the front of the station.

Information on bus and London Underground services is available on the Transport for London website at <https://tfl.gov.uk/>

If you need information on how to change to another mode of transport at the station, please speak to a member of the team in the station.

The taxi rank is located beside the pick-up and drop-off point and is accessible. Our team is available to assist passengers to and from the taxi rank.

There are various bus stops located on Pancras Road, Euston Road and York Way.

When departing the station, we are happy to assist you to your connecting bus. We regret that at this time we are unable to collect passengers from arriving buses; we have engaged with the bus operator to consider options to support our arriving passengers in the near future.

Information on bus and London Underground services is available on the Transport for London website at [tfl.gov.uk](https://www.tfl.gov.uk) or on the TfL Go app.

If you need information on how to change to another mode of transport at the station, please speak to a member of the station team.



## Using the station at busier times

King's Cross is one of the busiest stations in the UK and there are times when the station can become congested. Our station teams manage passenger flow during busier times.

Off-peak times are when the station is least busy – these are normally during the week after 09:30 until 16:00, and after 19:00.

If you require assistance to travel through the station during busier times our team are available to assist. Please contact a member of the team throughout the concourse or go directly to the Customer Information point opposite platform 9–10 where our team will provide assistance to your train.



# If things do not go as planned

---

## Booked assistance failures

Where your booked assistance has not been provided or does not go as confirmed by the operator, passengers can submit a claim for redress to the operator of the train they were travelling on, or due to travel on, when the failure took place. We will provide you information as required to help you.

---


## Planned or unplanned disruption

We will tell you about disruption to services by displaying information on our customer information screens and making audio announcements throughout the station.

If you have booked and/or require assistance during times of disruption we would ask that you make yourself known to one of our station colleagues at the Customer Information Point who will support you by providing information on your booked service, and will assist with your onward journey including rearranging assistance as necessary.

All information during disruption will be communicated to you including regular delay updates to help you decide on your travel preferences and if required, how to access suitable alternative transport options.





---

We will provide access and information on how to claim compensation when you are delayed.

Prior to any long-term refurbishments at our stations we will consult user groups and stakeholders.

We will notify you of any short or long-term refurbishments on our website and National Rail Enquiries to help you plan your journey in advance and when you are in our stations we will provide information prior to and during these refurbishment activities.

We will also keep passengers up to date via our social media platforms: [@NetworkRailKGX](https://twitter.com/NetworkRailKGX) on X (formerly known as Twitter).



# Station facilities

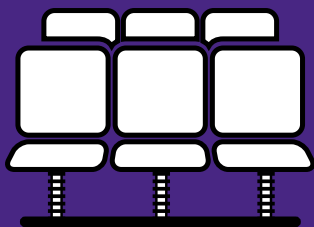


## Seating

Seating is located throughout the station, all of which is available during station opening hours.

Location	Customer information screens	Priority seating	Heated
<b>Main concourse</b> The concourse has seated areas for passengers.	Yes	No	No
<b>Waiting room</b> Seating is available for our passengers.	Yes	No	No
<b>Platforms</b> Seating is available for our passengers conveniently located at key points.	Yes	No	No

In addition to this we have a Passenger Assist Lounge where passengers and companions who have booked assistance can sit (for opening times please see page 20).



---

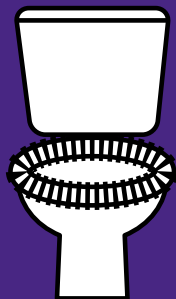
## Toilets

All toilets are free to use and open during station opening hours.

There are two accessible toilets on the ground floor that are kept unlocked until 23:00, after this time, please speak to a member of staff who can assist you with access.

Toilets including accessible toilets, baby changing facilities and a Changing Places toilet can be found beside platforms 9–10.

There is one accessible toilet on the mezzanine level which can be accessed with a radar key.



## Changing places

Our Changing places toilets have been designed so that they are completely accessible and provide sufficient space and equipment for people who are not able to use the toilet independently. They are an extra facility provided in addition to the accessible toilets available for independent use. They can be found beside platforms 9–10.

---

## Showers including accessible showers

Showers are available for passengers, however there is a charge for using these, payable at the lost property office beside the stairs of the Parcel Yard pub.

## Left luggage

Passengers can leave luggage in our Left Luggage facility which is located underneath the Parcel Yard pub adjacent to platforms 9–10.

If you require assistance to access this facility, please speak to one of our station team.

## Left luggage opening hours

Day	Time
Monday – Sunday	07:00 – 23:00

For more information:

+44 (0)20 3468 4670

Left Luggage Service & Facilities –  
Left Baggage ([left-baggage.co.uk](http://left-baggage.co.uk))

---

## Lost property

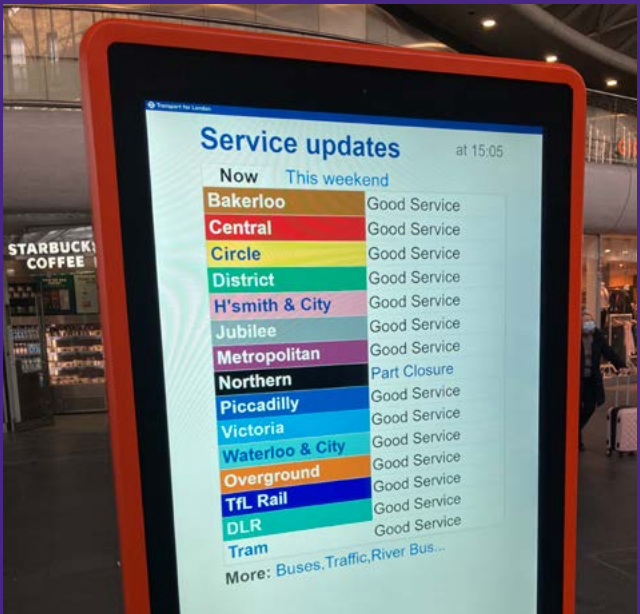
Lost property is also located within left luggage. Any missing items can be reported via <https://www.lostproperty.org>



## Customer information screens

We have various customer information screens across the station that provide train information, including train times and platform numbers.

We also provide audio announcements for all our train services and other customer related information.



## BSL Customer Information Screens

A BSL information screen can be found below the departure boards, next to the gateline to platforms 0–8. It provide information on train departures and updates during disruption.

## Information points

There are multiple information points located across the station concourse where our train operator colleagues will be able to help you with information about the station and our services including access to local area, tourist and other transport information.

Staff are available on the concourse during station operating hours.

An example of one is shown below.



# Help Points

Push button information points where you can speak to a member of staff 24/7. These are located at:

- Halfway along all platforms
- In the accessible lounge
- The accessible passenger drop off bays
- The mezzanine footbridge ticket gates





## Catering and retail

As our retail offering can change regularly, please visit our station website page for up to date information or ask for a station map at the station.



---

## More detailed accessibility information

Our website station pages contain all the information on London King's Cross station, visit [London King's Cross – Facilities, Shops and Parking Information](#)

# Getting in touch



## If things go wrong

We value and welcome your feedback, so please share your experience with us. You can do so in the following ways:

**At our managed stations:** Employees are trained to help you if you have any questions. Speak to any Network Rail member of staff at one of our managed stations and they will attempt to resolve your query.

**National Helpline: 03457 11 41 41**, open 24 hours a day, seven days a week including bank holidays. If the query can't be resolved immediately, we will log your feedback and look into the matter.

**Online:** [www.networkrail.co.uk/contactus](http://www.networkrail.co.uk/contactus) where you can submit a station complaint form.

You can access frequently asked questions or choose to provide feedback to Network Rail from this link, which is also where you will find our online contact form.

**Live chat:** Our live chat is available from

Day	Time
Monday – Friday	07:00 – 21:00
Saturday – Sunday	08:00 – 20:00

[www.networkrail.co.uk/contactus](http://www.networkrail.co.uk/contactus)

---

**X:** [@NetworkRail](#), we respond to as many queries as we can on X or will help you to log an issue for us to look in to.

**Post:** We have regional community relations teams. If action is required, our central team will pass your query or feedback to the team that works in your area. You can write to us at:

**Network Rail  
Waterloo General Offices  
London  
SE1 8SW**

---

## On the day of travel

If you have any questions about your journey prior to accessing the station, please contact the Train Operator you booked assistance with. **Alternatively you can contact the National Passenger Assist team on 0800 022 3720 who will direct you to the correct person.**

You can follow us on X for updates about the station – [@NetworkRailKGX](#).

Whilst our X account can offer useful information, it isn't monitored 24 hours a day so for urgent advice we would advise you to contact our **National Helpline on 03457 11 41 41**. We will aim to respond to any messages on X as soon as possible.

## How to escalate a complaint

If you are unhappy with how Network Rail or a train operator has dealt with your complaint you can contact the Rail Ombudsman, which is an independent organisation set up to resolve complaints about the rail industry.

Telephone: **0330 094 0362**

Textphone: **0330 094 0363**

Email: [info@railombudsman.org](mailto:info@railombudsman.org)

X: [@RailOmbudsman](https://twitter.com/RailOmbudsman)

Website: [www.railombudsman.org](http://www.railombudsman.org)

Post: **FREEPOST – RAIL OMBUDSMAN**



## How to contact train operators



### LNER

Trains between London, Yorkshire and Scotland

Post: **Freepost RTUH-TUGH-GCLZ**  
**Cramlington**  
**NE23 1WG**

Telephone: **03457 225 333**

Text relay service: **18001 03457 225 333**

Email: [customers@lner.co.uk](mailto:customers@lner.co.uk)

Website: <https://www.lner.co.uk>

X: [@LNER](https://twitter.com/LNER)



### LUMO

Trains between London and Edinburgh

Telephone: **0345 528 0409**

Textphone: **18001 0800 031 8542**

Email: [Customerexperience@lumo.co.uk](mailto:Customerexperience@lumo.co.uk)

Website: <https://www.lumo.co.uk>

X: [@LumoTravel](https://twitter.com/LumoTravel)



### Grand Central

Trains between London, Yorkshire and Sunderland

Post: **Customer Relations Manager,**  
**Grand Central Rail, Ground Floor,**  
**Wakefield Kirkgate Station,**  
**Monk Street, Wakefield, WF1 4EL**

Telephone: **0345 603 4852**

Email: [customer.services@grandcentralrail.com](mailto:customer.services@grandcentralrail.com)

Website: <https://www.grandcentralrail.com>

X: [@GC\\_Rail](https://twitter.com/GC_Rail)



## Hull Trains

Trains between London,  
Stevenage and Hull

Post: **FREEPOST HULL TRAINS  
CUSTOMER SERVICES**

Telephone: **0345 071 0222**

Website: <https://www.hulltrains.co.uk>

X: [@Hull\\_Trains](https://twitter.com/Hull_Trains)



## Great Northern

Trains between London  
and Cambridge

Post: **Govia Thameslink Railway  
PO BOX 8644  
Derby  
DE1 9RQ**

Telephone: **0345 026 4700**

Website: <https://www.greatnorthernrail.com>

X: [@GNRRailUK](https://twitter.com/GNRRailUK)



## Govia Thameslink

Trains to Brighton, Gatwick Airport,  
Victoria Station

Post: **Govia Thameslink Railway  
PO BOX 8644  
Derby  
DE1 9RQ**

Telephone: **0345 026 4700**

Website: <https://www.thameslinkrailway.com>

X: [TLRRailUK](https://twitter.com/TLRRailUK)

# Further information

---

## About this guide

You will find a copy of this guide on our website. The guide is also available in alternative formats including large print, audio version and text only versions.

---

## Our Accessible Travel Policy

Our policy document sets out the commitments Network Rail has made, to ensure older and disabled passengers can use our stations and facilities.

You can find this on our website, or by contacting us using the details in the contact us section.

---

## Working with train operators

As part of our commitment to provide high quality assistance to our passengers we engage regularly with our train operators to review, monitor, and improve our service provision.



## **Our work with disabled people on improving accessibility**

London King's Cross Accessibility Forum has been set up to consult future changes to the station with our disabled passengers, helping to ensure we build a station fit for all.

---

### **National Freephone Passenger Assist**

**Telephone: 0800 022 3720**

**Textphone/minicom: 0845 60 50 600**

Textphone Free SMS Passenger Assist Forwarding Service: 60083 – text your requested journey from your phone and you will receive an instant message with the number you need to dial from your textphone unit.

**[www.disabledpersons-railcard.co.uk/travel-assistance/](http://www.disabledpersons-railcard.co.uk/travel-assistance/)**